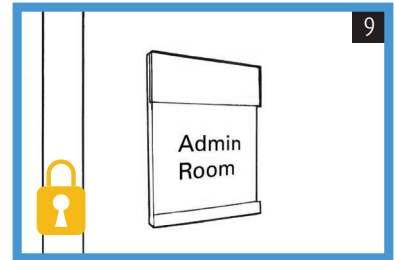
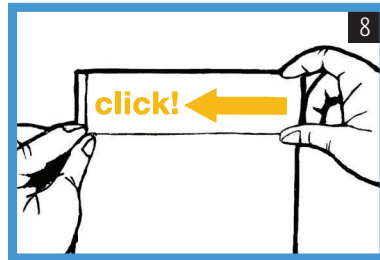
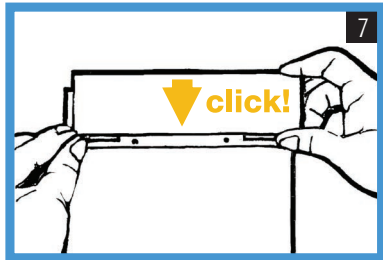
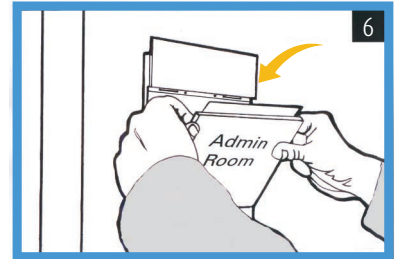
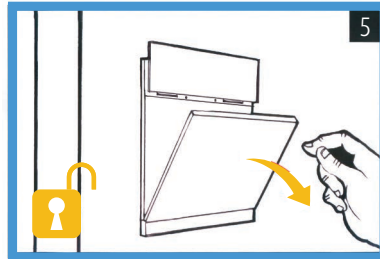
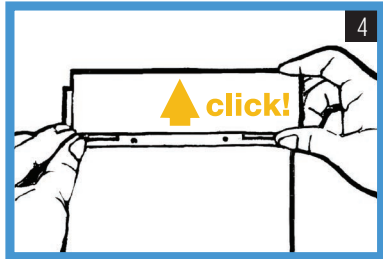
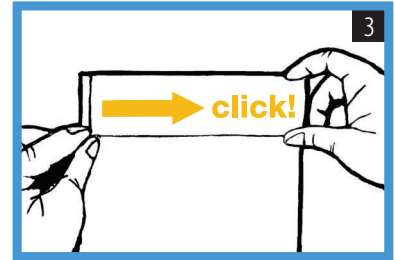
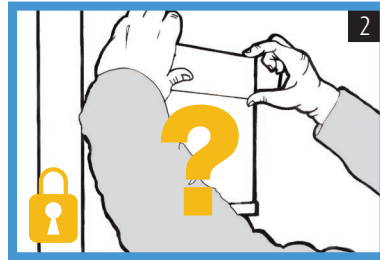
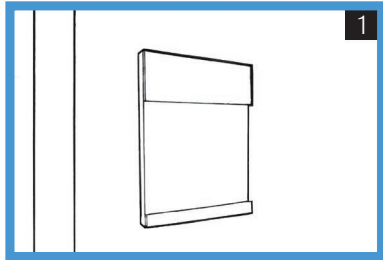




Truly lockable insert sign

No tools required



- 1 Empty paper insert sign
- 2 No apparent way in
- 3 Push header panel to the right firmly, until it 'clicks' into place
- 4 Push header panel upwards with two hands until it 'clicks'
- 5 Window opens (and is removable for internal cleaning)
- 6 Perforated paper label inserted & window closed
- 7 Header panels pushes down until it 'clicks'
- 8 Header panels pushes left until it 'clicks'
- 9 Sign is complete and locked again