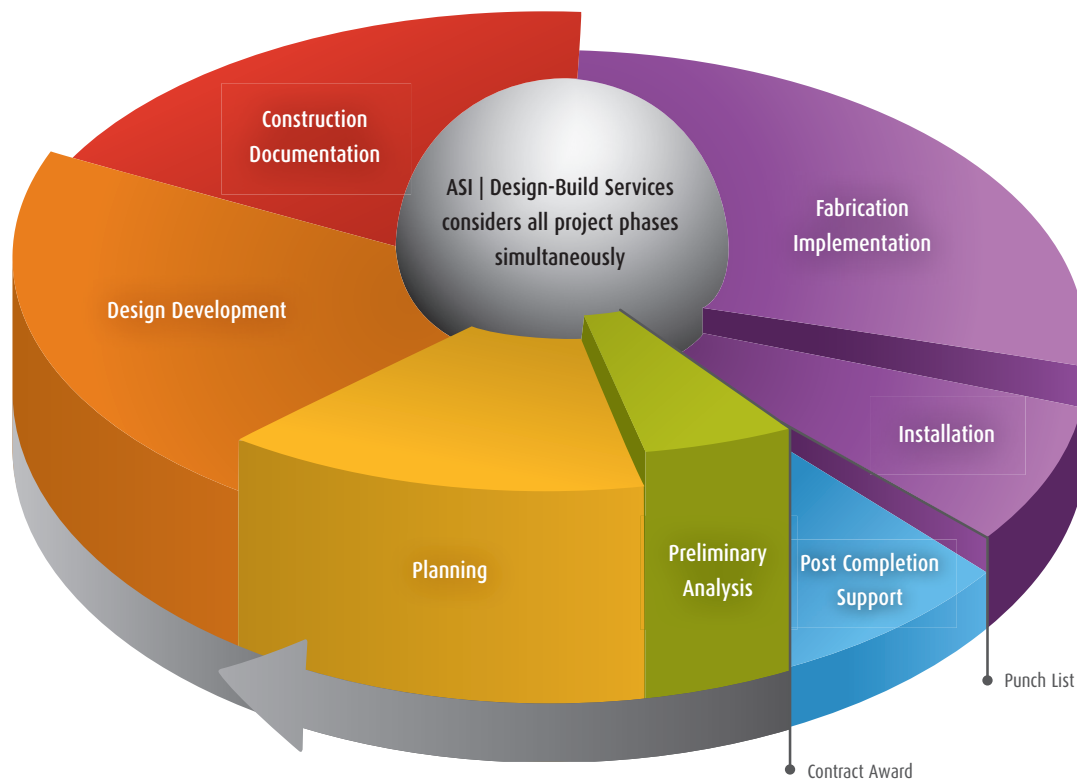


Delivering Value From Start to Finish

ASI has over 50 years of experience delivering quality service and product solutions for architectural environments. Our organization is comprised of experienced, multi disciplined team members with backgrounds in sign planning, industrial design, environmental graphic design, project management, fabrication and installation.

ASI is focused on delivering professional services to our clients that will result in the best overall value – from the planning process to implementation and support – ASI | Design-Build Services is a true total solution approach to creating, implementing and maintaining a cohesive signage program.



How We Deliver

ASI specializes in interior, exterior and dynamic digital signage in both standard systems and custom solutions. Through ASI | Design-Build Services, we utilize a proven process that allows ASI to be your single source of professional services and implementation from planning and design to fabrication and installation. As such, we can deliver a comprehensive signage program designed specifically for our clients' needs that is aesthetically pleasing, functionally effective and implemented on-time and on-budget.

Preliminary Analysis & Planning - Comprehensive process to assess the needs and operations of the facility and it's users, determine local codes and ADA requirements and apply this knowledge to the development of the signage plan

Design Development - Through a collaborative process ASI develops a practical, creative, and cohesive family using either or both pre-engineered standard systems or custom fabrication

Construction Documentation - The comprehensive signage program is fully detailed in construction for fabrication and implementation of the program in strict compliance with the design intent and specifications

Fabrication - By following approved construction documentation, craftsmen are able to produce and deliver premium-quality signage to exacting specifications

Installation - Based on project schedule, or installation specialists ensure each project is delivered on-schedule

Post Completion Support - Maintenance support and tailored online reorder system allows your program to maintain established signage standards and evolve with your facility

Featured Project: Penta Career Center

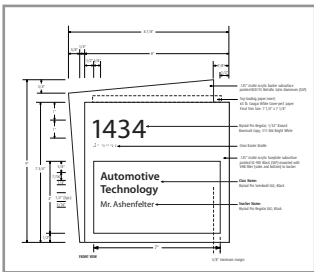
ASI designed, fabricated and installed a complete signage solution for the PENTA Career Center vocational high school that complements the look of the state-of-the-art facility. ASI won the public bid for the project, but after reviewing the original signage specifications, ASI consulted with PENTA staff to design a more attractive solution, while also consolidating the number of signs to deliver a more effective wayfinding solution while delivering these extra services at the same amount as the original budget.

Service Offerings

- Design & Wayfinding
- Fabrication & Installation

Product Applications

- Custom interior solution
- InTac™, ADA-Ready™ signs
- Updateable window signs
- Digital interior signage



Featured Project: BlueCross BlueShield of Western New York

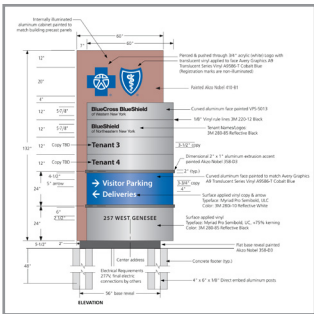
BlueCross BlueShield's new master-planned corporate headquarters on the shores of the Buffalo waterfront is a LEED® Silver certified facility that houses more than 1,250 employees and spans three separate buildings. ASI designed, fabricated and installed a complete signage and wayfinding solution.

Service Offerings

- Design & Wayfinding
- Manufacturing & Installation

Product Applications

- Pacific Interior™
- Digital signage
- Fabricated aluminum illuminated logos and letters
- Custom aluminum exterior signage



ASI | Design-Build Services ensures sustainable strategies are implemented from the very beginning of each project. Through eco-friendly processes, maximizing material sizes and implementing signage based on desired function, ASI will implement a solution that is best for the facility and the environment. Our belief is if the signage program is properly planned, then it is properly implemented and it will have a longer lifecycle within the facility.